



## The railway industry was once America's largest private employer. See why at the Illinois Railway Museum.

### Did Ya KNOW?



The Museum's depot, built in 1851, is the oldest train depot west of the Appalachian Mountain's in regular use.

Restoration and preservation projects are an important part of the Museum. Some projects take years to complete.



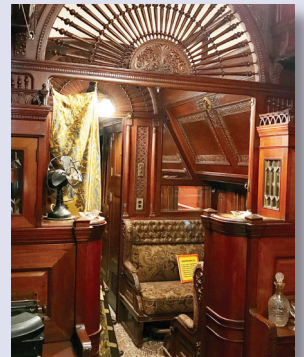
The museum was founded in 1953 by ten people who joined together to purchase the Indiana Railroad Interurban Car #68

### Xtra Fun, Xtra Credit!

For adventurers 10+

#### Sweet Dreams!

George Pullman designed the Pullman Sleeping Car known for its luxury in 1864. Draw plans for the interior of your very own railway sleeping car. What would you like to have in it?



#### Travel by Train!

Before the Transcontinental Railroad, it cost almost \$1,000 to travel cross country. After the railroad was completed, the price dropped to \$50. Compare today's prices to travel from NY to Los Angeles by air, by bus and by train.



#### Just Plain Train Fun!

It's full steam ahead with this motorized train set that includes 18' of tracks, LED lights and railroad sounds. Part of the Museum Access Education curated collection of toys, games and projects. Click here to purchase.



For more fun facts and information about Museum Access, go to [www.museumaccess.com](http://www.museumaccess.com)  
Or contact us at [info@museumaccess.com](mailto:info@museumaccess.com)

©Museum Access Media LLC 2019